

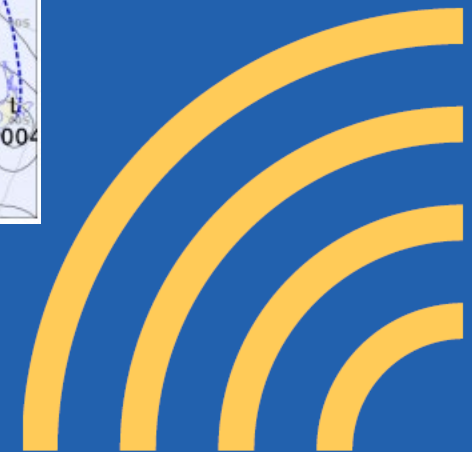
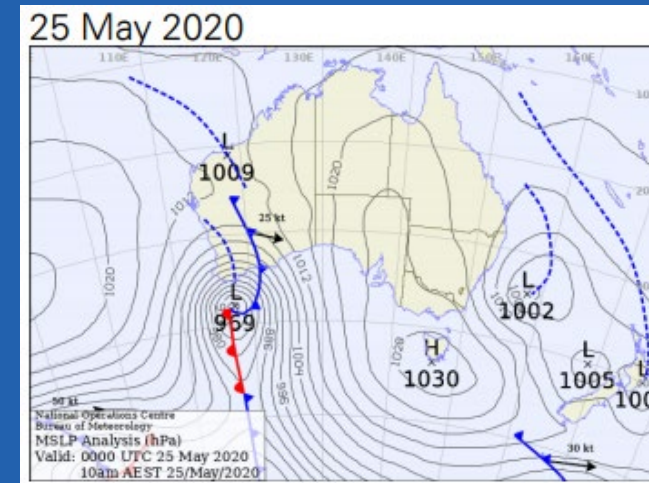
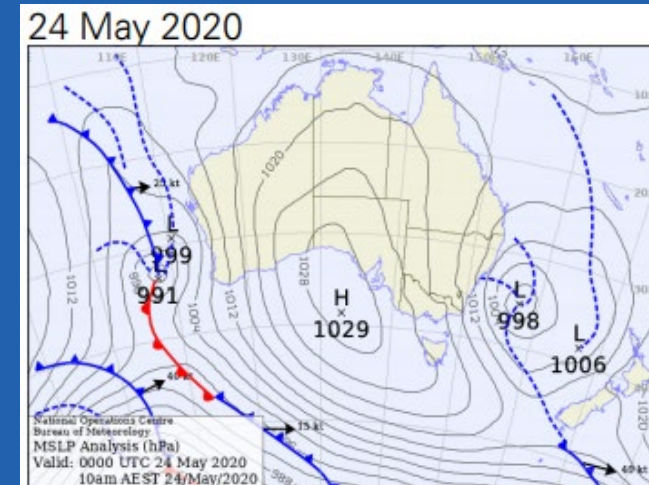
2019/20

# Mosquito Management Annual Report

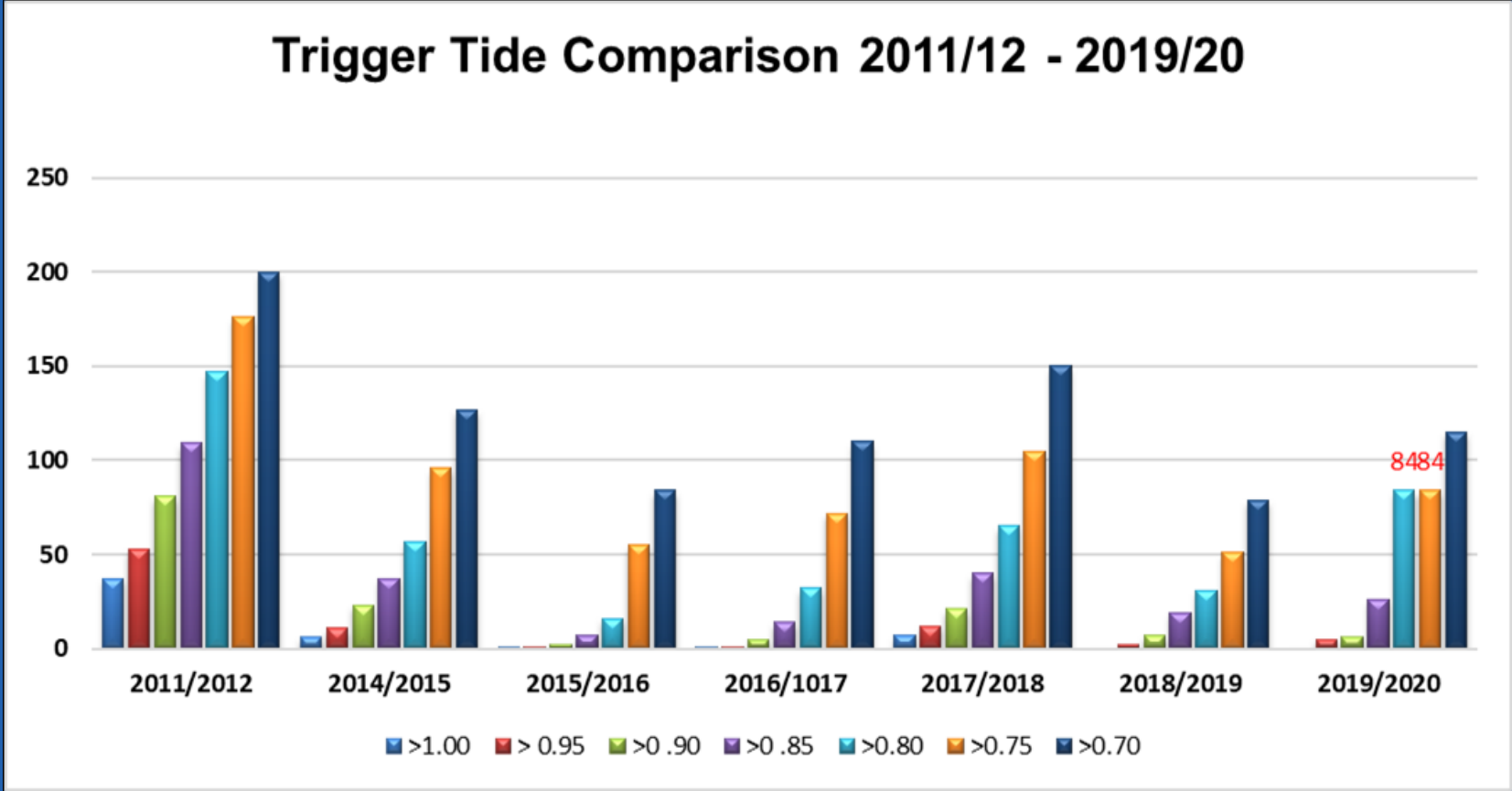


# 2019/20 Climate Influences

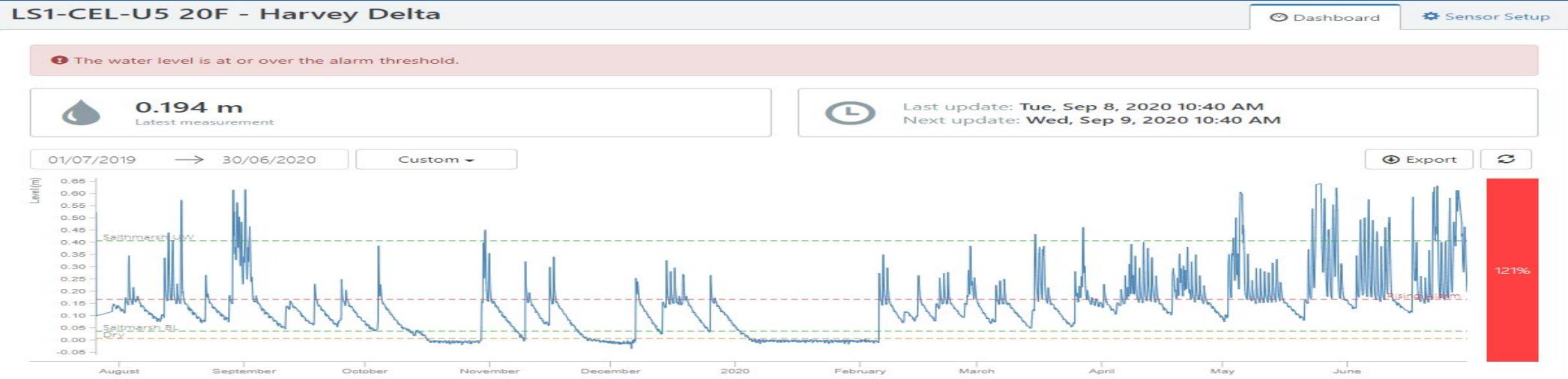
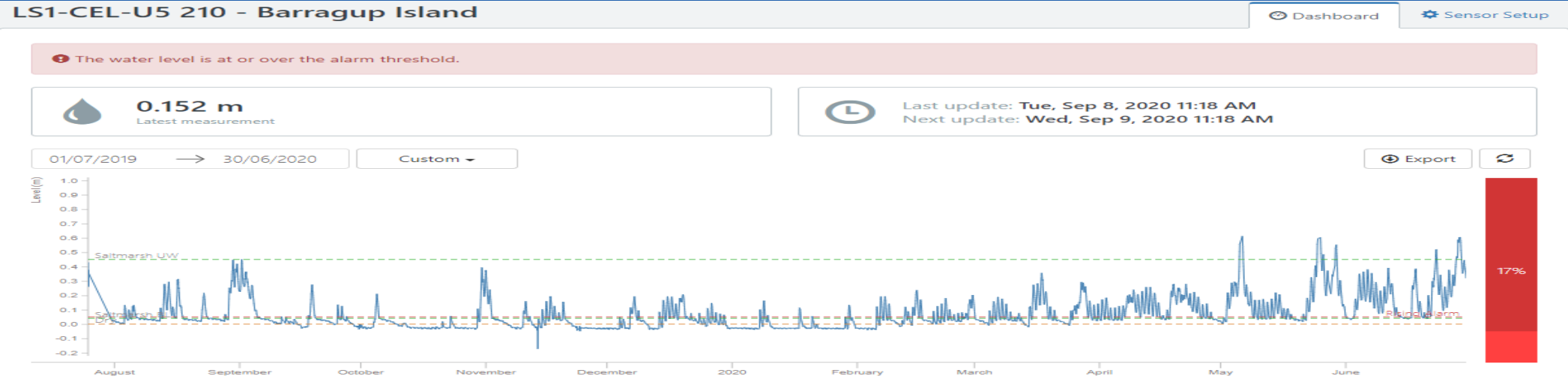
- El Nino-Southern Oscillation (ENSO) Neutral
- Positive Indian Ocean Dipole (IOD) Spring - Summer 2019
- Very warm and dry Spring 2019
- Series of west coast troughs + SW cold fronts February/ March - 2020
- Six (6) back to back aerial treatments
- Significant event - 24/25 May 2020 significant storm surge
- Forth highest sea level recorded at Fremantle (1897)



# Season 2019/20 Water Level Observations



# 2019/20 Water Level Observations - LS1 sensors

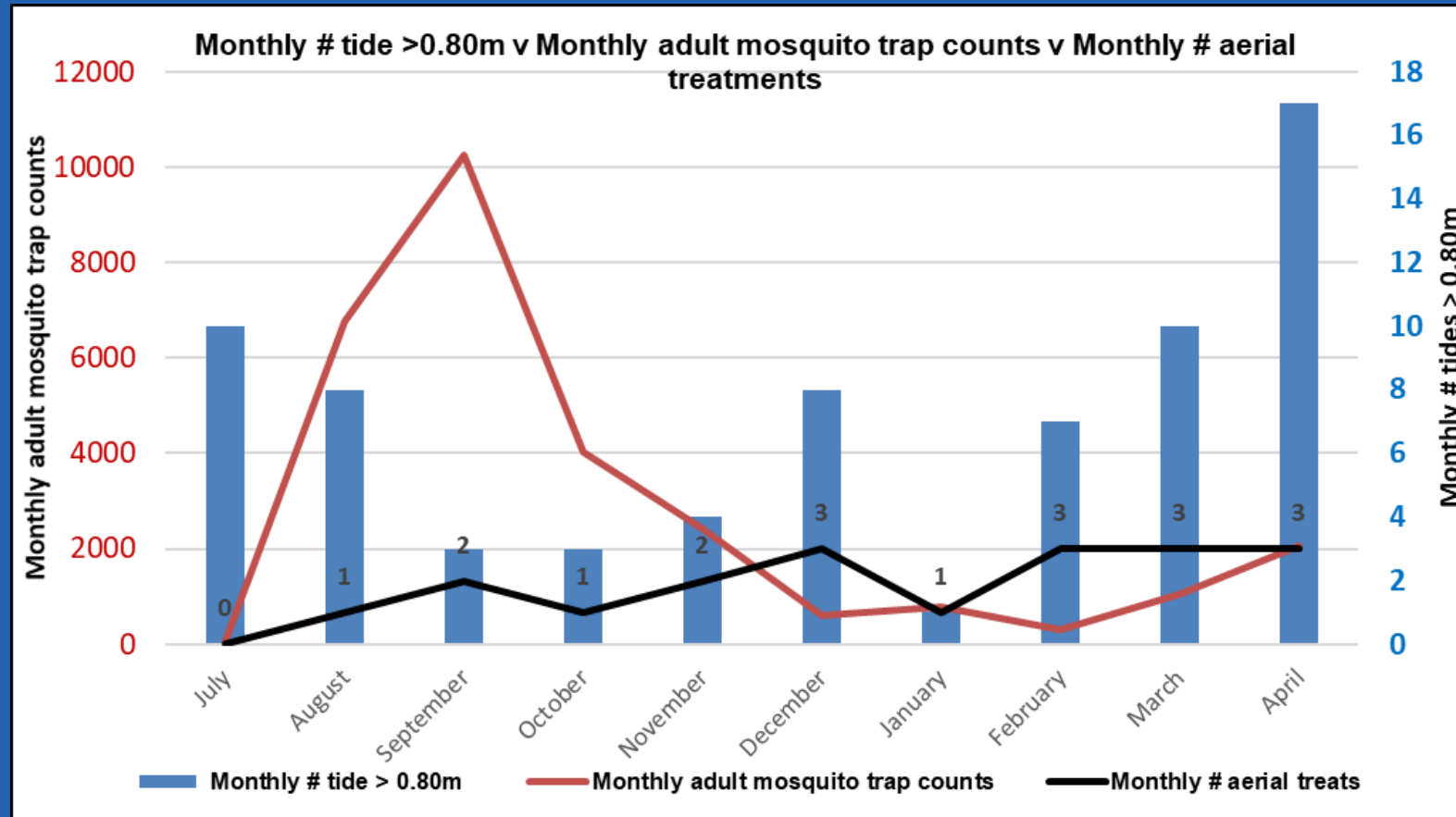


# Aerial Larviciding 2019/20

- 21 aerial larviciding treatments completed
- A total of 2,993 hectares treated
- Average treatment size - 146 hectares
- Largest individual treatment - 347 hectares (Sept 2019)
- 560.0 kg of Prolink® Prosand applied
- 13,662 kg of Corn Cob Bti - Barmac® 200GR applied
- 4,356 kg of Corn Cob Bti / S methoprene - VectoPrime® applied
- 315 L of Liquid Bti - VectoBac® 12AS / Teknar® 1200



# Mosquito Surveillance 2019/20



# Mosquito borne disease

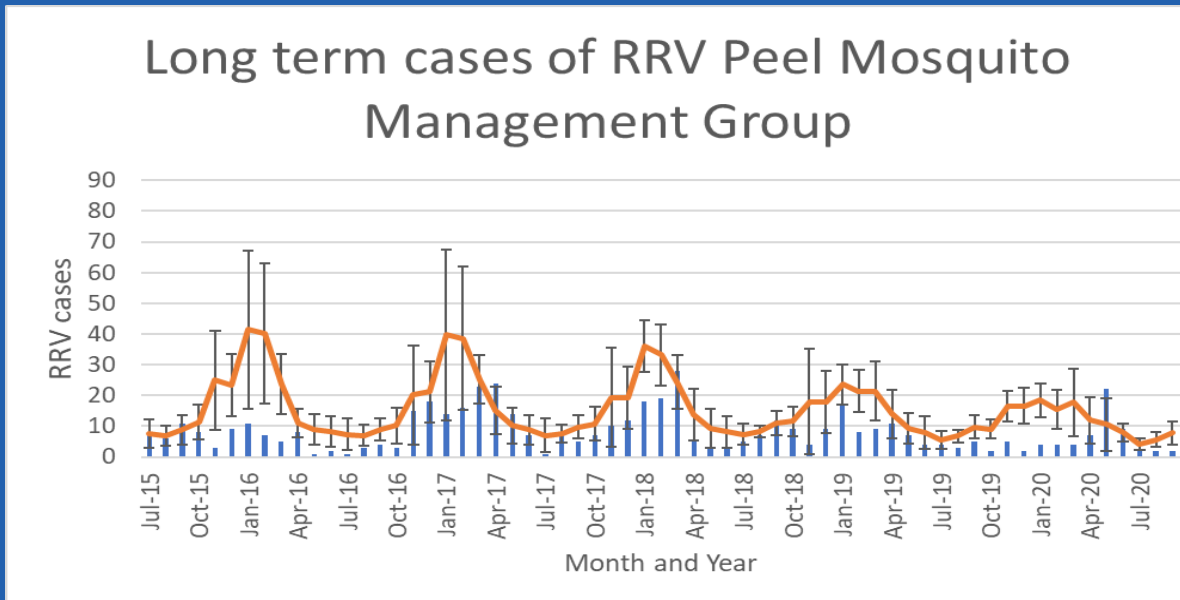
## Ross River virus

## Barmah Forest virus



Mandurah		
Mosquito-borne Disease	No. Notified Cases 2019/20	Long term average
RRV	29	69
BFV	1	3

Peel		
Mosquito-borne Disease	No. Notified Cases 2019/20	Long term average
RRV	71	132
BFV	3	4.8



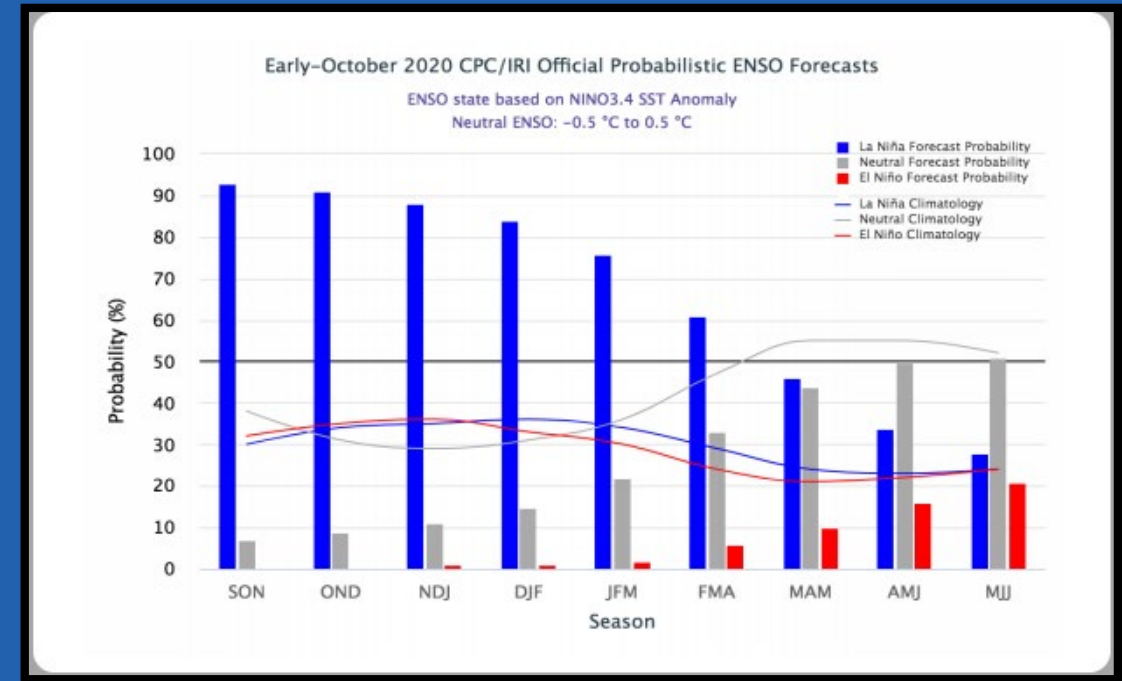
# Community Engagement

- Seventeen (17) community enquiries received (nine - 9 in 2018/19)
- Four (4) community email updates provided
- Eleven (11) social media posts
- Local radio advertising - 97.7 Coast FM / 91.7 Wave
- Fight the Bite campaign continued to be supported
- 2019 National Tree Day
- 2019 Mandurah Children's Festival
- 2019 My Park Grooves x 4



# 2020/21 Season

- Warm, dry Winter, average Autumn
- Six (6) aerial larvicide treatments – 1347.5 hectares
- Adult mosquito populations contained
- Multiple RRV detections in Peel region



- La Niña (ENSO) event confirmed 29 September 2020
- Expected to peak in December 2020
- Potentially similar in strength to the 2010 -12 event – much briefer



# 2020/21 Season to date

- 2020/21 - 1347 ha
- 2019/20 - 854 ha
- 2011/12 - 1124 ha

